

# 2022 SOCIOLOGY NEWSLETTER

OFFICIAL NEWSLETTER OF THE  
LMU SOCIOLOGY DEPARTMENT

SPRING 2022

UNH 4300

## INSIDE THIS NEWSLETTER



DEPARTMENT EVENTS.....	2
IN THE CLASSROOM.....	3
BELLARMINE FORUM.....	4
ALPHA KAPPA DELTA.....	5
STUDENT AWARDS.....	6
CLASS OF 2022 STUDENT ACHIEVEMENTS.....	7
LMU UNDERGRADUATE RESEARCH SYMPOSIUM 2022.....	8-9
PACIFIC SOCIOLOGICAL ASSOCIATION.....	10
ALUMNI SPOTLIGHT.....	11
FACULTY SPOTLIGHT .....	12
ELLEN BARRETO FELLOWSHIP.....	13
FACULTY NEWS AND ACCOMPLISHMENTS.....	14-16

*Let us hear from you:*

**Newsletter Editor**

Akiko Iwata

Digital Media Assistant

[aiwata@lion.lmu.edu](mailto:aiwata@lion.lmu.edu)

**Learn more about the Department:**

<https://bellarmine.lmu.edu/sociology/>

SPRING 2022

## MESSAGE FROM THE CHAIR

Dear Students, Parents,  
Alumni, Faculty, and Staff,

First, I'd like to congratulate  
the LMU Class of 2022  
sociology majors and

minors! You've made it through this challenging  
year with persistence and grace and we cheer you  
on as you depart LMU to achieve new goals.

This year, we made our masked return to campus  
and learned how to navigate our altered learning  
and living environments as the Coronavirus  
pandemic continued. Some students experienced  
their first semesters on campus at LMU after having  
been an LMU student for over two years. Some  
reconnected with people they had primarily seen  
on screen for months. Throughout, we used our  
sociological imaginations to understand how our  
individual struggles connected to systemic roots  
despite the large-scale collective experience of the  
pandemic.

I hope that the best parts of our pandemic  
experience, like new hobbies, remote meetings, and  
animal companions' guest appearances in Zoom  
class, will somehow be integrated into our  
transformed campus reality. As we end this  
academic year, I'm especially grateful for the  
students, faculty, and staff of LMU sociology who  
have kept us engaged and inspired.

- Professor Muraco



# DEPARTMENT EVENTS


## 2021-2022

Co-Sponsored by:  
Women and Gender Studies,  
Psychology, Peace and Justice,  
and Sociology Departments  
and Truth, Racial Healing, and  
Transformation Center Alliance

### Criminal Justice or Punishment?

A panel featuring  
**Baba Akili**  
Dignity and Power Now  
Justice LA

April 5, 2022  
6-8 PM  
UHall 1000



LOYOLA MARYMOUNT UNIVERSITY  
**SOCIOLOGY  
ALUMNI PANEL**

**WEDNESDAY (3/9) FROM 4:20-  
5:45PM ON ZOOM**  
**Join us in welcoming:**

Mark Ballinger (LMU Sociology & Philosophy '18), will graduate from Santa Clara University School of Law in June 2022, has interned for the Innocence Project and Santa Clara County Public Defender's Office

Nicole Baxley (LMU Sociology '22), currently works at Center for Council, a nonprofit organization that helps incarcerated and system-impacted individuals

Megan Coulter (LMU Sociology '10, LMU Community Mental Health and Catholic School Counseling '15), works as a mental health counselor for Didi Hirsch Mental Health Services

Michelle Nader (LMU Sociology '13) has a master's degree in International Relations from University of San Francisco, works at Air B & B as a Senior Employee Engagement Specialist

Saron Shiferaw (LMU Sociology '14) has a master's degree in social work from University of Pittsburgh, works as a Program Coordinator at CSU Long Beach for the Office of Undergraduate Research Services.

**Join at: <https://lmula.zoom.us/my/bcla16>**



### BELLARMINI FORUM ON CLIMATE CHANGE, JUSTICE, AND HEALTH



Screenshot from the spring 2022 alumni panel: Michelle Nader, Mark Ballinger, Saron Shiferaw, Megan Coulter, and Marianna Hernandez, with current LMU students: Lara Ullrich, Ambar Garcia Guerrero and Emi Iribarren







# IN THE CLASSROOM



## Applied Community Sociology course successfully launches!

This semester, the Department of Sociology launched a new course in Applied Community Sociology.

Taught by Clinical Assistant Professor, Dr. Nathan Sessoms, the course matches students with community-based organizations in South Los Angeles as they embark on their anti-racist missions. Additionally, students build upon their existing knowledge of social inequalities and urban community dynamics while learning about the various anti-racist strategies that partnering organizations employ to create more equitable conditions. Students are also exposed to many of the common challenges associated with providing critical services and resources to community members and community institutions.

This semester, nine students participated in the course and were matched with one of five participating organizations:

- Jenesse Center*
- Media & Repertoire*
- Community Health Councils*
- A New Way of Life Reentry Project*
- The Social Justice Learning Institute*

During the final class meeting of the semester, participants shared about their various experiences:

Junior **Veronica Gomez** shared, “I really enjoyed interacting with the kids (at one of Jenesse Center’s) shelters. I learned so much about the organization and the valuable resources and services they provide by connecting with and listening to them! We led arts and crafts activities with them, but it was so much more than that. I plan to re-connect with them after Finals.”

Senior **Camille Dervieux** explained, “Engaging with film makers and screening films for (A New Way Of Life Reentry Project’s) Justice on Trial Film Festival was a lot of responsibility, but, while learning about various aspects of the organization’s approach to reduce recidivism, I was supported the entire time by my Supervisor. It was a great experience!”

Senior **Esme Bruce-Romo** stated, “Curating positive images of Black and Latinx families for social media messaging was a good way to learn more about their (Media & Repertoire’s) strategy to change commonly held perceptions beyond South LA that are demeaning and hurtful.”

The course is now accepting registrants for the Fall, and relationships with additional partner organizations are being established. “I’m pleased, thus far, with the progress of the course, but even more pleased with the relationships being built with community-based organizations and the impact of the course on our students”, said Dr. Sessoms.



# BELLARMINE FORUM

## Climate Change, Justice and Health

This year, Dr. Rachel Washburn, Associate Professor of Sociology and Director of the Health and Society minor, directed the Bellarmine Forum on Climate Change, Justice, and Health. Washburn proposed the Forum to provoke a dialogue on how bodies, human and nonhuman alike, are imperiled by systemic arrangements that are unjust and unsustainable. An additional goal of the Forum was to shine light on how the climate crisis is prompting new understandings of responsibility and relationality across time and place.

“I have been deeply affected by stories about the devastating impacts of climate change on people, animals, and habitats around the world,” Washburn said. “Living in California, it’s very hard to ignore the clear impacts of climate change, whether it’s scorching hot summer days, mega fires, drought, or suffering forests, the markers are all around us. In directing this year’s Forum, I really hoped to bring a justice lens to thinking about climate change and the ways in which historic and contemporary practices of extraction and exploitation got us into this mess. While we know that all of us will be affected by climate change in some way, we also know that the impacts are being disproportionality felt by those who are socially and economically marginalized and/or vulnerable.”

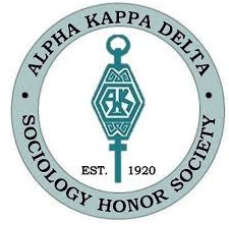
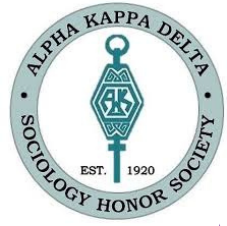
The Forum featured 12 talks by renowned scholars and activists across the 2021-2022 academic year attended by students from five classes as well as faculty, students, and staff from across campus.





# ALPHA KAPPA DELTA

## INTERNATIONAL SOCIOLOGY HONORS SOCIETY



### 2022 Inductees

Alysson Campbell

Julia Koo

Jon Cedar

Chloe Margarones

Judith Chavez-Cardenas

Mirian Melendez

Diego De La Torre Rodriguez

Ryan Moses

Denise Espinoza

Amani Ortiz-Syed

Desire Evans

Veronica Gomez

Elizabeth Iribarren

Lara Ullrich

Katherine Kautzman

Samantha Vasquez

Candie Khoe

The Department of Sociology has an active chapter of Alpha Kappa Delta, the International Sociological Honor Society, which was founded in 1920. Its stated purpose is to promote interest in the study of sociology, research of social problems, and other social and intellectual activities leading to the improvement of the human condition.

Each spring the Department recognizes those students who meet the academic requirements for membership in Alpha Kappa Delta. Over the years we have had a number of distinguished guest speakers for the occasion, including Dr. Laurence Bobo (LMU Sociology '79)— who has recently been appointed Dean of Social Science at Harvard University—and Judge Frederick Lower, former Dean of the Loyola School of Law. The evening is a special recognition of the dedication and accomplishments of our students and the support of their families.

Please Contact Dr. Eric Magnuson for more info!



# STUDENT AWARDS

## BEST STUDENT PAPER

Each year, the **Best Student Paper** is awarded to one of the papers accepted to be published in the *Sociological Eye*.

The student author of the Best Paper award will receive a cash prize of \$100 and a plaque honoring their work. We

look forward to receiving future submissions for the 2022 edition of the *Sociological Eye*!

## Winner!

**Judith Chavez-Cardenas**

“Understanding Communities of Color, COVID-19 Vaccination Concerns, and Vaccine Advertisement Strategies”

## Honorable Mention

**Julia Koo**

“Female Gamers and Social Media: How Gender Norms are Perpetuated Online”

## Congratulations to Lizbeth Ramales Arango!

Lizbeth received multiple university awards, including the Presidential Citation, an Arrupe DEI Award, and the Donald P. Merrifield Award for intercultural leadership.



## Student Honors at Graduation

### Summa Cum Laude

Cameron A. Cummings  
Lillianna Marie  
Slaughter

### Magna Cum Laude

Melisa Aylin Akvardar  
Daria Elizabeth Young  
Emma Banda  
Carisa Aguilera-Dupnik  
Jordyn K. Patterson  
Lara Ullrich  
Julia Koo  
Samantha Lee Vasquez  
Lizbeth Ramales Arango

### Cum Laude

Jon Michael Cedar  
Mobeen Hirbod  
Katherine G.  
Kautzman  
Gianna Mack  
Allyson Trinity  
Campbell  
Nicole Hidemi Baxley  
Athena A. Muro  
Judith Chavez-Cardenas  
Maryam M. Sudzhyan  
Dina Cristina Gaitan  
Mirian Elizabeth  
Melendez

## Other Student Awards

**Mirian Melendez** won the Raymunde McKay RSHM Award for outstanding student leadership during her four years at LMU.

**Lillian Slaughter** was recognized as the SOCL Outstanding Scholar of 2022.

If you won an award and we missed it, please let us know: [sociology@lmu.edu](mailto:sociology@lmu.edu)



# CLASS OF 2022

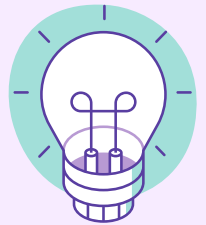
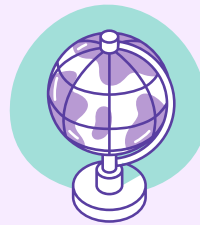
## Student Achievements

- **Denise Espinoza** ('23) will be interning with the Orange County District Attorney at the West Justice Center this summer.
- **Laura Ullrich** will be attending Columbia University in the Master of Social Work Program.
- **Jordyn Patterson** will be starting the Ph.D. program in Sociology at USC.
- **Veronica Gomez** ('23) was accepted into the American Political Science Association Ralph Bunche Summer Institute at the University of North Carolina.
- **Allyson Campbell** will be completing the 4+1 Management program at LMU.
- **Lizbeth Ramales Arango** has accepted a position with Teach for America in Chicago.
- **Emma Balda** successfully completed a curatorial internship at the Wende Museum.
- **Daria Young** will be attending the M.A. program in Urban Planning at UCLA in the fall.
- **Kyle Friedler** will be attending the M.A. program in Public Policy at the University of Illinois Chicago.
- **Kate Kautzman** was accepted into Gonzaga University School of Law.
- **Diego de la Torre** is a member of Tau Sigma Delta, the honor society for transfer students.

# LMU UNDERGRADUATE RESEARCH SYMPOSIUM 2022



Denise Espinoza,  
“Women and LGBTQ  
Military/Veteran IPV  
Perpetration”  
Mentor: Dr. Min Yoo



Mirian Melendez,  
“Life Inside Juvenile  
Detention: The Impact of  
Educational,  
Rehabilitative, and  
Trauma-Focused  
Programs for Incarcerated  
Youth”  
Mentor: Dr. Anna Muraco

**JOIN US IN CONGRATULATING ALL SOCIOLOGY STUDENTS WHO PRESENTED AT THIS YEAR'S SYMPOSIUM!**



# LMU UNDERGRADUATE RESEARCH SYMPOSIUM 2022



**Lizbeth Ramales Arango,**  
**"Undocumented Students in Higher Education"**  
 Mentor: Dr. Anna Muraco and Dr. Juan Mah y Busch



**Veronica Gomez,**  
**"Analyzing Family Dynamics and Student's Duration in the Upward Bound Program"**  
 Mentor: Dr. Stephanie Limoncelli

**JOIN US IN CONGRATULATING ALL SOCIOLOGY STUDENTS WHO PRESENTED AT THIS YEAR'S SYMPOSIUM!**

# PACIFIC SOCIOLOGICAL ASSOCIATION

JORDYN  
PATTERSON &  
JUDITH CHAVEZ-  
CARDENAS

## PSA Conference

The Pacific Sociological Association Conference took place at the Sheraton Grand in Sacramento, CA on April 8th, 2022.

**Jordyn Patterson**, a senior Sociology major and McNair Scholar, presented her paper, "Underfunded Schools and Their Impact on Students' Education" at the undergraduate roundtable.

**Judith Chavez-Cardenas**, a senior Sociology major and McNair Scholar, also presented her research her poster, "Understanding Communities of Color, COVID-19 Vaccination Concerns, and Vaccine Advertisement Strategies" at the undergraduate poster session.





# ALUMNI SPOT LIGHT



## CLAIRE RAMIREZ

Class of 2011

### What's next?

Claire is entering her 2nd year in LMU's Doctoral Program in Educational Leadership for Social Justice (Ed.D.) and has been recognized as a Jackson Scholar by the University Council for Educational Administration (UCEA).

She hopes to fill research gaps to better understand the impact of intergenerational trauma on indigenous youth's academic performance while also focusing on inherited cultural wisdom and practices that serve as protective factors for indigenous communities.

### Advice for current sociology majors?

“Go where your gut guides you, identify your passion and don't be afraid to be unconventional in finding your career path.”

LMU Class of 2011 graduate, **Claire Ramirez**, is currently working as a Program Specialist with the Orange County Department of Education. Her role as a school administrator is working with students that struggle with chronic absenteeism and/or mental health-related challenges that impact their academic achievement. She provides training to school staff to improve trauma-informed care interventions, integrates restorative practices to reduce prison-to-pipeline patterns within school districts, and serves as a School Site Council board member to advocate for equitable learning opportunities for students while being at the forefront of evaluating and changing school policy.

Claire received her Master's in Social Work from USC, with a concentration in Mental Health: Military and Veteran Family Services. She also holds a Pupil Personnel Services Credential (PPSC). Her professional training ranges from working with individuals and families at the U.S. Veteran Affairs Hospital, juvenile correction institutions, and within school-based mental health settings as a Licensed Clinical Social Worker. Her passion for social justice, mental health, and wellness influenced her to open a private practice office where quality and affordable mental health services are provided primarily in Southern California.

Claire attributes her degree in Sociology as laying the foundation for the rest of her personal and professional growth. “To work with families goes beyond relationship building- you have to understand the power of systems, cultural influence, poverty gaps, prejudice, discrimination, social movements, policy, and law. Sociology teaches you to be a critical thinker & now more than ever we need those who are trained to think critically, to understand differences amongst societies, & how to evaluate the world to bring about positive change.” Siempre adelante!

# FACULTY SPOTLIGHT



## DR. ANGEL VILLASELNO

Lecturer

### Background

My graduate research was primarily centered around showing that critical pedagogical frameworks rooted in social justice fosters positive academic identities in historically disenfranchised students of color. I completed my graduate degree from Syracuse University's School of Education in Cultural Foundations of Education which is a macro education program that has a Critical Race Theory (CRT) emphasis. As a male of color with a nontraditional upbringing, I have dedicated my personal, educational, and professional career to understanding what equity means and exploring ways to operationalize it to improve outcomes for disenfranchised communities. I am fortunate to have extensive experience in various capacities developing programs, policies and initiatives in Santa Monica, Boyle Heights and Syracuse, New York. From working in the nonprofit sector, to being a school administrator to working within government; equity and social justice has always at the root of what I do and who I am. This is my first year here at Loyola Marymount University and I could not be happier to be part of such a rigorous and upstanding institution! I hope to continue being a Lecturer here for years to come and expand on the already robust course catalogue within our Sociology department.

### Fun Fact:

Although I am a Sociologist, I geek over Quantum Theory in my spare time and am fascinated by experiments that prove that energy is the true core mechanic of the universe.

### Introduction

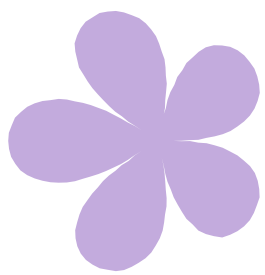
My name is Angel Villasenor and I have 18-years of professional experience working with vulnerable and disenfranchised communities to cultivate meaningful change using grassroots methodologies. Inspired by my lived experience, I pursued an undergraduate degree in Sociology and Latin American and Latino/a Studies from the University of California Santa Cruz. I decided to study Sociology because I wasn't sold on the idea that the social stratification in our society was just "the way things are." I refused to accept that and was grateful for my experience in academia in learning how to name and deconstruct the various "isms" that negatively impacted me and my community in order become an activist, educator, and an agent for change. I always viewed my education as a form of resistance against the status quo and I made it a point when teaching to utilize critical inquiry so that my students know how to conduct a well-reasoned and comprehensive analysis and are confident when needing to make informed decisions.

### Words of Wisdom

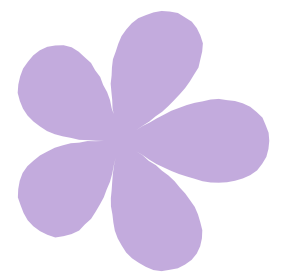
"Education either condition the younger generation into acceptance of society's status quo or becomes the practice of freedom through which people deal critically and creatively with reality and discover how to transform their worlds."

-Paulo Friere





# ELLEN BARRETO FELLOWSHIP



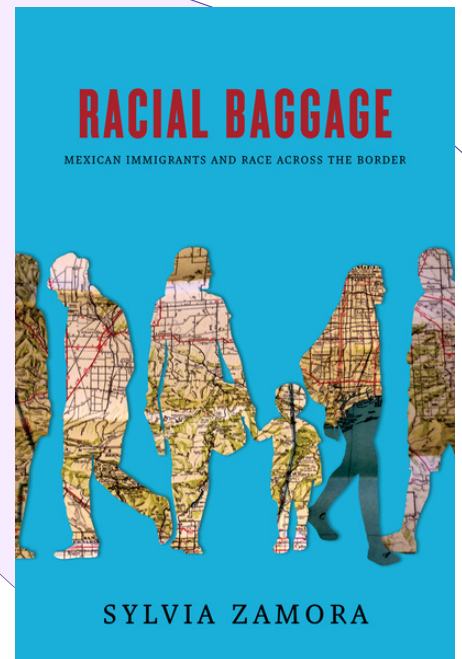
Lizzie Copulsky '14 chose LMU as a transfer student because she liked the small class sizes and the tight-knit community. It wasn't until she was pursuing her master's degree at a large institution that Copulsky realized just how deep a commitment LMU faculty have for their students' success. For Lizzie, it was Rachel Washburn, Ph.D., associate professor of sociology and director of the Health and Society Program who would encourage her career trajectory, and later, inspire

a meaningful gift to LMU's Bellarmine College of Liberal Arts in honor of her late mother. Dr. Washburn was a large influence in my decision to go into public health," said Copulsky. "Although I did not know her well at the time, looking back, she committed a lot of her time and care into helping me pursue my career path, whether she was suggesting graduate schools, reviewing graduate entrance essays, or helping me consider employment paths after I completed my M.P.H. (master's in public health)," she said.

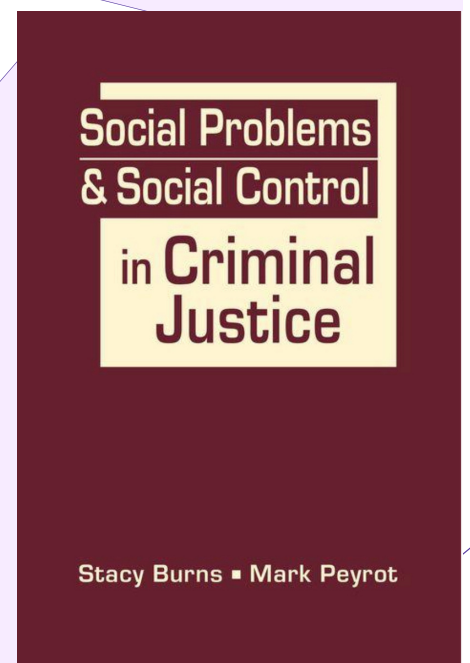
The Ellen Barreto Fellowship has already been awarded to two outstanding students undertaking research projects in the recently established Health and Society Program. For Washburn, the scholarship amplifies the program. "My hope is that the scholarship continues to attract students to the health and society minor," said Washburn. "It's important that we foster these types of high-impact learning opportunities for students so they can work closely with a faculty mentor and ultimately have a little bit of a leg up in whatever their next step is in their career. We are grateful and honored to further Ellen's legacy through student-initiated research projects."

## HOT OFF THE PRESS

Congratulations to **Professor Sylvia Zamora** for publishing her first book, *Racial Baggage: Mexican Immigrants and Race at the Border* (Stanford University Press, July 2022)! Drawing on interviews with Mexicans in Los Angeles and Guadalajara, Dr. Zamora illustrates how racialization is a transnational process that not only changes immigrants themselves, but also everyday understandings of race and racism within the United States and Mexico. Within their communities and networks that span an international border, Zamora argues, immigrants come to define "race" in a way distinct from both the color-conscious hierarchy of Mexican society and the Black-White binary prevalent within the United States. In the process, their stories demonstrate how race is not static, but rather an evolving social phenomenon forever altered by immigration. *Racial Baggage* is now available for pre-order where books are sold!



Congratulations to **Professor Stacy Burns**, for publishing her book, *Social Problems and Social Control in Criminal Justice* (June 2022, Lynne Rienner Publishers). Burns' book focuses on government efforts to address social problems related to the criminal justice system. As a researcher, Professor Burns' role is to "identify the mechanisms and pivotal moments where change does, or at least potentially can occur." She hopes that readers of this book will continue to think critically about how the criminal justice system has developed and operates; the changes and shifts in social control effects; and how those efforts sometimes exacerbate the very problems they try to alleviate. On a more immediate level, Professor Burns wants readers to consider the meaning of justice in their own lives, and the role that everyone can play in re-envisioning public safety and the relationship between communities and the criminal justice system: "Keeping communities safe doesn't just involve individual interactions, such as those between police officers and the public, it is also about ensuring that the institutions of government are serving all the people."





# FACULTY ACCOMPLISHMENTS



## PUBLICATIONS



**Burns, Stacy** and M. Peyrot. 2022. *Social Problems and Social Control in Criminal Justice*. Lynne Rienner Publishers.

**Burns, Stacy**. “Lay and Professional Competencies: Linking Garfinkel’s Tutorial Exercises to a Study of Legal Work,” forthcoming in *The Anthem Companion to Harold Garfinkel* (P. Sormani and D. vom Lehn, Eds.), (Anthem Press, July 2022).

Clarke, Adele, **Rachel Washburn**, and Carrie Friese. 2022. *Situational Analysis in Practice: Mapping Relationalities Across Disciplines*. London: Routledge.

Friese, Carrie, Adele Clarke and **Rachel Washburn**. 2021. “Grounded Theory and Situational Analysis” in Gibson, Ruiz-Juno and vom Lehn (Eds.) *Handbook of Symbolic Interaction*. London: Routledge.

Friese, Carrie, **Rachel Washburn**, and Adele E. Clarke. 2021. “Situational Analysis as Critical Symbolic Interactionism” in *Handbook of Symbolic Interactionism*, Dirk vom Lehn, Natalia Ruiz-Junco and Will Gibson (Eds.) (pp. 357-368). London: Routledge.

Friese, Carrie, Adele E. Clarke, and **Rachel Washburn**. 2021. “From Constructivist Grounded Theory to Situational Analysis” in *Qualitative und Interpretative Methoden in der Politikwissenschaft*, Barbara Prainsack and Mirjam Pot (Eds.) (pp. 157-174). Vienna: Facultas. Chapter in German.

**Moore, Ravaris L.**, Jennie E. Brand, Tanvi Shinkre. 2021. itpscore: Stata module to perform iterative propensity score logistic regression model search procedure.  
<https://ideas.repec.org/c/boc/bocode/s459018.html>

**Washburn, Rachel**, Carrie Friese, and Adele E. Clarke. 2021. “Situational Analysis: Mapping Relationalities in Psychology” in *Qualitative Research in Psychology: Expanding Perspectives in Methodology and Design*, 2E, Paul M. Camic (Ed.) (pp. 167-186). Washington: American Psychological Association.

Zamora, Sylvia. 2022. *Racial Baggage: Mexican Immigrants and Race Across the Border*. (Stanford University Press, July 2022).

## PROFESSIONAL SERVICE POSITION

**Stephanie Limoncelli**, Chair of the Thomas C. Hood Social Action Award Committee of the Society for the Study of Social Problems.

**Andrea Plate**, part-time faculty member, was elected Board Member of U.S. Vets, the largest non-profit for unhoused veterans in the United States (2021).

**Sylvia Zamora** was elected Council Member of the American Sociological Association Latino Sociology Section for a three-year term (2021-2024).

**Sylvia Zamora** was elected to the LMU BCLA Grievance Committee for a three-year term (2022-2025).

## IN THE NEWS, MEDIA, & PUBLIC TALKS

**Stephanie A. Limoncelli.** 2021. “There’s an App for That? Ethical Consumption in the Fight against Trafficking for Labor Exploitation.” 14th United Nations Congress on Crime Prevention and Criminal Justice, Kyoto Japan.

## CONFERENCE PRESENTATIONS

**Stephanie Limoncelli** and **Zeynep Sisli** (2021) “The Right to Life at Work as a Human Right” Fourth ISA Forum of Sociology, Porte Alegre, Brazil.

**Ravaris Moore** (2021) “Differential Effects of Gun Violence Exposure on High School Dropout Rates” University of California – Irvine, Demography Group, February 2021

**Mathew Fox, Ravaris Moore, & Xi Song.** “Entwined Embedded Events: The Effect of Parental Incarceration Timing on Children’s Academic Achievement”  
◦ Population Association of America Annual Meetings 2021

**Anna Muraco, Sarah Trainer & Jodi O'Brien** (2021) "I Know My Problems Aren't As Serious": Faculty Stress and Inequity in Higher Education pre-and during Covid-19, Pacific Sociological Association

**Min Yoo** (2021) How Definitions and the Student Body Composition Shape Asian American Students' Perception of Sense of Belonging at a Diverse University.

**Sylvia Zamora** (2021) Discussant - Durable Ethnicity: Mexican Americans and the Ethnic Core, by Christina Sue and Edward Telles, Pacific Sociological Association.

## FAREWELL TO DR. MOORE!



Professor Moore is on leave serving as a Presidential Postdoctoral Research Fellowship at Princeton University. After his fellowship, Dr. Moore will join the NYU Department of Sociology as a Visiting Assistant Professor. This appointment will transition into a tenure track Assistant Professorship in the NYU Department of Sociology. Dr. Moore will remain on faculty with LMU sociology through January 2023. We wish Dr. Moore the best!